

# Kākāpō

3 Bdrm / 159m<sup>2</sup>

Welcome home. From the front entrance, Kākāpō is all about connection and warmth. You get generous living space in a footprint that is small enough to be suitable for a standard city section.



3 BEDROOMS



2 LIVING ROOMS



2 TOILETS



1 BATHROOM



2 CAR GARAGE



1 WALK-IN ROBE



1 ENSUITE



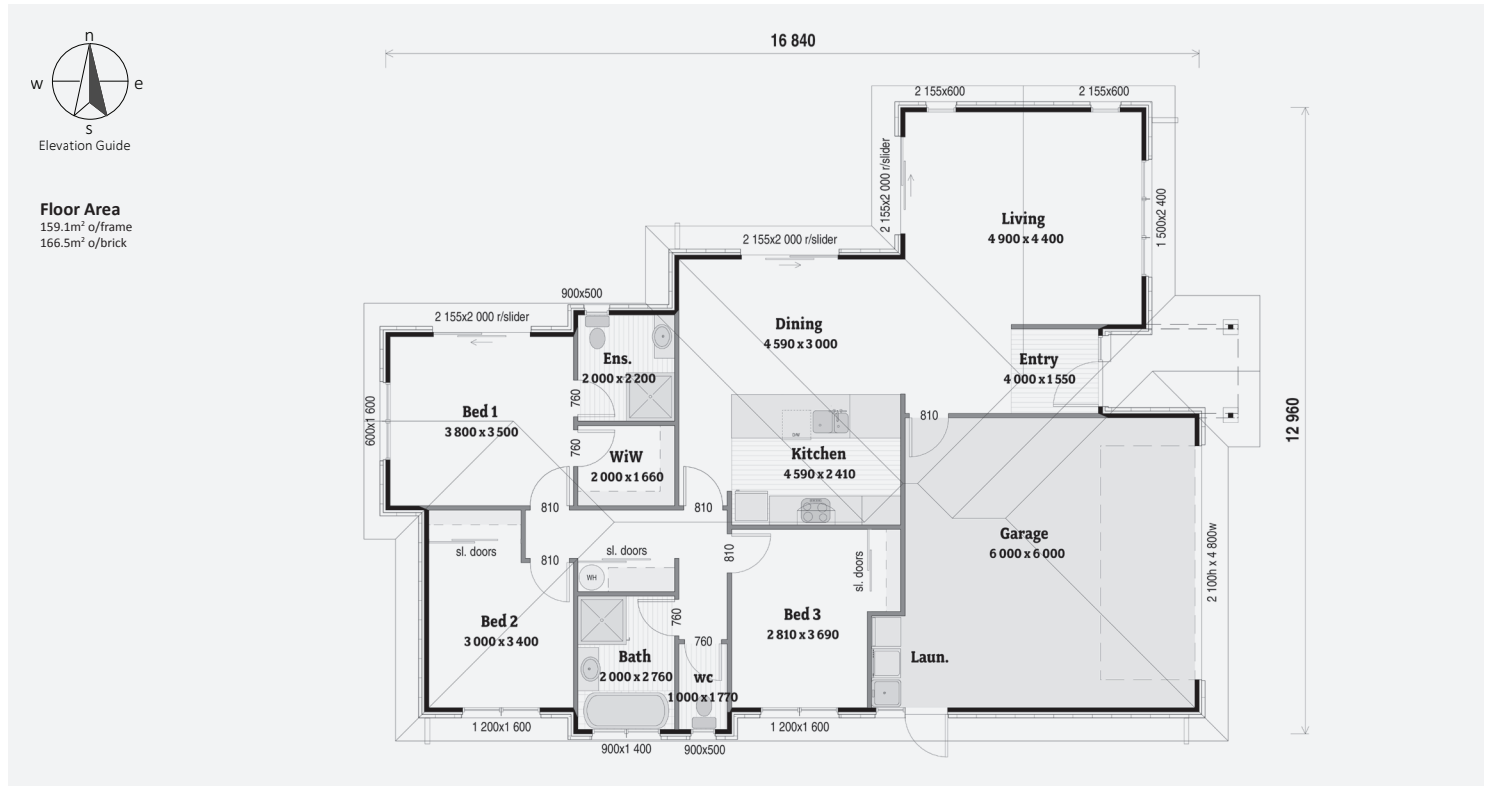
✓ LAUNDRY



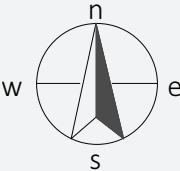
Artists Impression Only

## KEY FEATURES OF THIS HOME

- Brick veneer and weatherboard cladding
- Open plan living
- Double garage



# Kākāpō 3 Bdrm / 159m<sup>2</sup>



Elevation Guide

**Floor Area**  
 159.1m<sup>2</sup> o/frame  
 166.5m<sup>2</sup> o/brick

